



## SCC and SCS Straight and Curved Slat Conveyors

Our line of SCC and SCS slat conveyors is extensively used in the food and beverage industry. They are available in stainless steel 304 or by special request in 316.

Their simple construction and flexible design makes them ideal for many applications with a wide range of optional attachments, guides, pans, wash tanks and more.

The chains are stainless steel, or polyacetal

Factory :New Borg El Arab 2nd Zone  
entrance 2c street 3 - entrance 2c street 5  
Tel:+20-(03)-4624127 - 4624126 - 4624025  
fax : (03) 4624291

[Info@UnitelEgypt.com](mailto:Info@UnitelEgypt.com)

Cairo Office : Corniche El Nile, Maadi, Cairo  
Tel +20:(0)2-25266333  
Fax +20:(0)2-25264888

[Sales@UnitelEgypt.com](mailto:Sales@UnitelEgypt.com)



[www.UnitelEgypt.com](http://www.UnitelEgypt.com)



[/UnitelEgypt](#)

# SCC and SCS Straight and Curved Slat Conveyors

## Features

SCS slat conveyors are manufactured to satisfy the requirements of the food and beverage industry, and are available in stainless steel 304 or painted steel.

The return strand of the conveyor runs inside the conveyor body, and is supported by return rollers.

The SCC curved slat conveyors are attached to straight sections to obtain L, S or U-shaped curves.

## Characteristics

The drive unit is positioned at the end of the conveyor, and a transition cover protects personnel from injury.

The slats run on a wear resistant strip of UHMWPE for extended operation and reliability.

The side channels are punched at regular intervals to accommodate guide rails and support brackets.

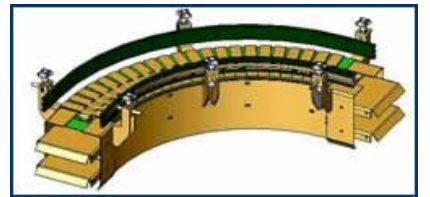
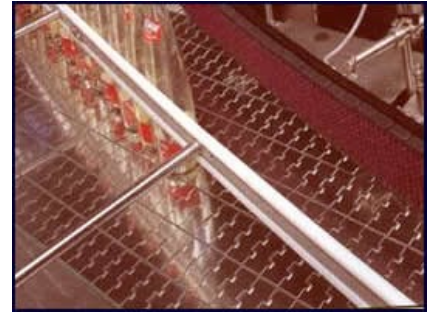
The SCS and SCC family uses special beam supports that can compensate for irregular flooring.

Chains are either stainless steel or plastic (polyacetal), straight or side-flexing in case of curved slat conveyors.

## Applications

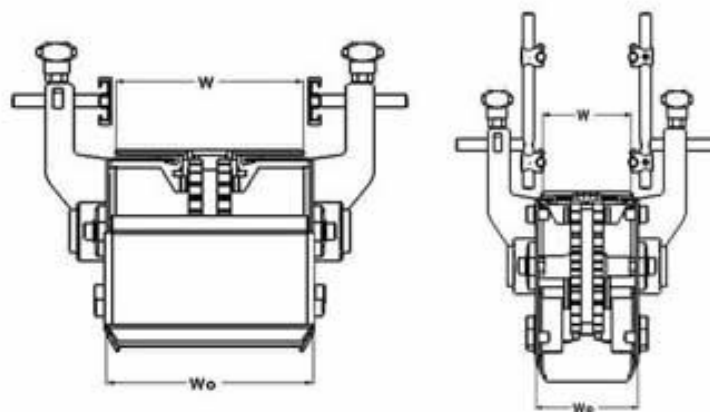
SCS Slat conveyors are used mainly for transporting bottles, jars, cans, and similar containers in the food, confectionary and beverage industry.

They are also used to transport small items and cartons.



# SCC and SCS Straight and Curved Slat Conveyors

## SCS Specifications



Loading Capacity	1600 N to 2550 N Maximum Slat Tension
Head Pulley Diameter	154.18 mm. [25 tooth]
Tail Pulley Diameter	157.18 mm. [25 tooth]
Return Strand support	Slat supported by wear-strip along whole length
Linear Speed	22 m/min
Mains Supply	380 VAC +/- 10% 50 Hz, 3 Phase
Motor Power	0.37 kW ~ 1.5 kW depending on length, linear speed and load.
Motor Class	IP54
Insulation Class	IP54
Slat Materials	Stainless Steel , Polyacetal
Finish	Stainless Steel 304 or 316 on demand. Electrostatic Epoxy Powder RAL 7035 .

# SCC and SCS Straight and Curved Slat Conveyors

## Dimensions

### Standard Width / Preferred Values

82.5 (3.25")	114.3 (4.5")	190.5 (7.5")
98	129.8	206

## Note

The SCS family's Side Channels, are made in modules of 2450 mm length. Standard Section Lengths can be combined to obtain the nearest required length.

Modules are attached together using Butt Couplings, to obtain any desired length.

## Options

Floor Supports bipods or tripods	Yes
Special Supports designed on request	
Ceiling Hangers	No
Wall Mount	No
Left or Right Side Drive	Yes
Variable Speed Drives	Yes
Stainless Steel Construction 304 / 316 / Painted steel	Yes

## Accessories

Guard Rails and Guides: Tubular or Plastic Profiles

End Stops

Pushers

Transfer Points and Transfer Plates

Optical Switches and Controls

Push Button Station

مكتب القاهرة : برج القاتوينين كورنيش المعادى  
تليفون : ٢/٢٥٢٦٦٣٣٣  
فاكس : ٢/٢٥٢٦٤٨٨٨

مدينة برج العرب الجديدة - المنطقة الصناعية الثانية  
يونيتل/ مدخل ٢ ج شارع ٣ - مدخل ٢ ج شارع ٥  
تليفون : ٣/٤٦٢٤٤٢٤ - ٤٦٢٤٠٢٥ - ٤٦٢٤١٢٦ - ٤٦٢٤١٢٧  
فاكس : ٣/٤٦٢٤٢٩١



[www.UnitelEgypt.com](http://www.UnitelEgypt.com)



/UnitelEgypt

[Sales@UnitelEgypt.com](mailto:Sales@UnitelEgypt.com)

[Info@UnitelEgypt.com](mailto:Info@UnitelEgypt.com)